

### SM3 Test review on unit 11

1. -2
2. 5
3. 3
4.  $\frac{1}{2}$
5.  $-\frac{1}{2}$
6. 3
7. 2
8. 20
9. -2
10. 1
11. 0
12.  $\approx 1.5051$
13.  $\approx -0.0202$
14. no solution
15.  $\approx 172.4662$
16.  $10^4 = x$
17.  $e^x = 5$
18.  $3^5 = 243$
19.  $\log_5 625 = 4$
20.  $\log 100 = x$
21.  $\ln x = 2$
22.  $x = 1$
23.  $x = 3$
24. reflect over y-axis, translate down 7
25. vertical stretch of 3, translate left 3
26. D
27.  $(\log_2 5 + \log_2 x) - \log_2 y$
28.  $\log_8(2x - 3) - 4 \log_8 x$
29.  $\log_3 \left(\frac{6}{a}\right)$
30.  $\log(x^4 y^2)$
31.  $\log_4 \left(\frac{9x-45}{x^7}\right)$
32.  $\frac{\log 210}{\log 3.4} \approx 4.3694$
33.  $\frac{\log 3.8}{\log 4} \approx 0.9630$
34.  $\frac{\ln(a+b)}{\ln 5}$
35.  $\frac{\log(4x)}{\log 4}$
36.  $x = 2$
37.  $x \approx 3.990$
38.  $x = 30$
39.  $x = 166670$
40.  $x \approx 3.447$
41.  $x = \frac{5}{2}$
42.  $x = 84$

43.  $x = \frac{41}{12}$  or  $x \approx 3.417$

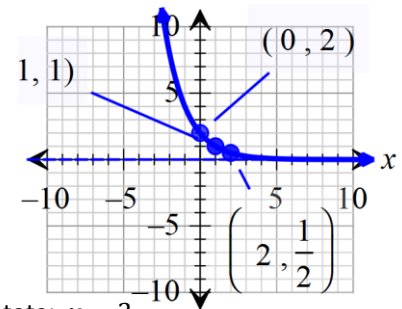
44.  $x \approx 6.161$

45.  $x \approx 0.050$

46. Domain:  $(-\infty, \infty)$ , Asymptote:  $y = 0$

Key points and transformations: translate right 1y

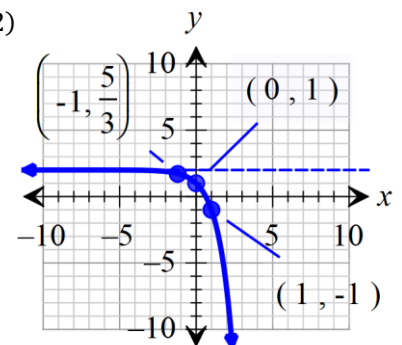
Range:  $(0, \infty)$



47. Domain:  $(-\infty, \infty)$ , Asymptote:  $y = 2$

Key points and transformations: reflect over x-axis,

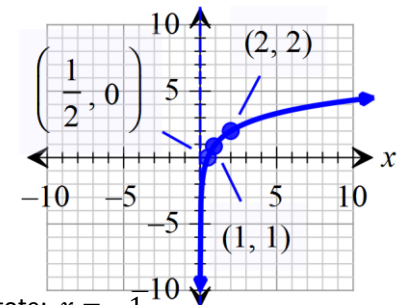
translate up 2, Range:  $(-\infty, 2)$



48. Domain:  $(0, \infty)$ , Asymptote:  $x = 0$

Key points and transformations: translate up 1, y

Range:  $(-\infty, \infty)$



49. Domain:  $(-1, \infty)$ , Asymptote:  $x = -1$

Key points and transformations: vertical stretch of 2,

translate left 1, Range:  $(-\infty, \infty)$

