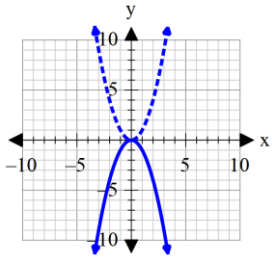


SM2 1.5 odd answers 2019-2020

1. $y = x^2$, reflect over x-axis

x	y
-2	4
-1	1
0	0
1	1
2	4

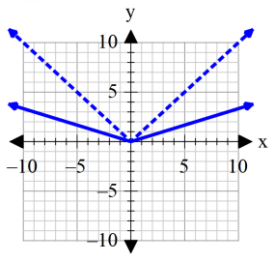
x	-y
-2	-4
-1	-1
0	0
1	-1
2	-4



3. $y = |x|$, vertical shrink of $\frac{1}{3}$

x	y
-2	2
-1	1
0	0
1	1
2	2

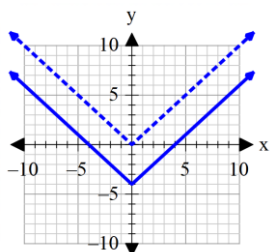
x	$\frac{1}{3}y$
-2	$\frac{2}{3}$
-1	$\frac{1}{3}$
0	0
1	$\frac{1}{3}$
2	$\frac{2}{3}$



5. $y = |x|$, translate down 4

x	y
-2	2
-1	1
0	0
1	1
2	2

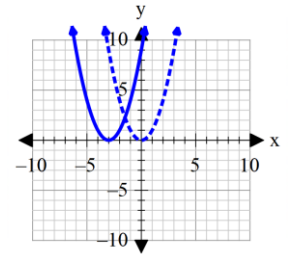
x	y - 4
-2	-2
-1	-3
0	-4
1	-3
2	-2



7. $y = x^2$, translate left 3

x	y
-2	4
-1	1
0	0
1	1
2	4

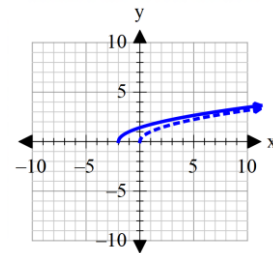
x - 3	y
-5	4
-4	1
-3	0
-2	1
-1	4



9. $y = \sqrt{x}$, Translate left 2

x	y
0	0
1	1
4	2

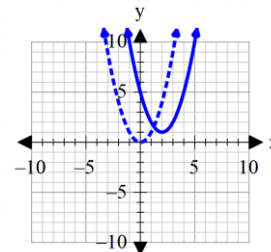
x - 2	y
-2	0
-1	1
2	2



11. $y = x^2$, translate right 2, up 1

x	y
-2	4
-1	1
0	0
1	1
2	4

x + 2	y + 1
0	5
1	2
2	1
3	2
4	5



13. reflect over x-axis, $y = -|x|$

15. vertical stretch of 2, $y = 2\sqrt{x}$